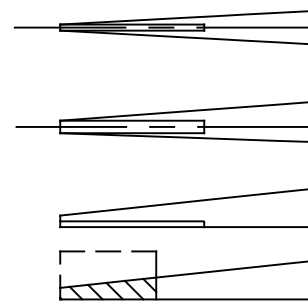
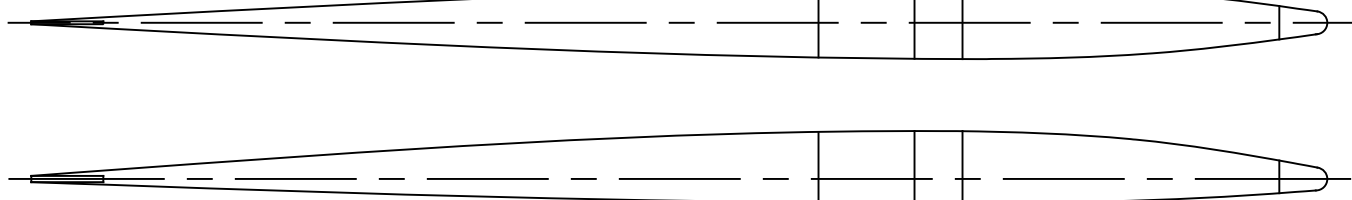


DUBRO / GOLDBERG TIP SKID  
MODIFIED FOR LEADOUT GUIDE  
USE LINE RAKE CALCULATOR  
ON NCLRA WEBSITE TO PLACE GUIDE

TRAILING EDGE OPTIONS:  
CARVE GROOVE WITH RAZOR SAW.  
INLAY  $\frac{1}{64}$  OR  $\frac{1}{32}$  PLY X  $\frac{3}{8}$ " WIDE STRIP.  
ON FLAT BOTTOM AIRFOIL, SAND RECESS  
INTO TRAILING EDGE BOTTOM, LAMINATE  
PLY TRAILING EDGE.  
SAND TO THE PLYWOOD FOR SHARP  
EDGE.  $\frac{1}{8}$  x  $\frac{1}{4}$  SPRUCE SANDED TO  
SHAPE IS ALSO COMMONLY USED.  
STRIP CAN BE MADE FROM 3 PLYS OF 5oz  
GLASS OR CARBON CLOTH, LAYED UP ON  
FLAT SURFACE. (VACUUM BAGGED  
PREFERABLE.)



AIRFOIL OPTIONS:  
MOST USE BASIC FLAT-BOTTOM  
2/1 SEMI-SYMETRICAL AND  
FULL SYMETRICAL ARE VIABLE OPTIONS

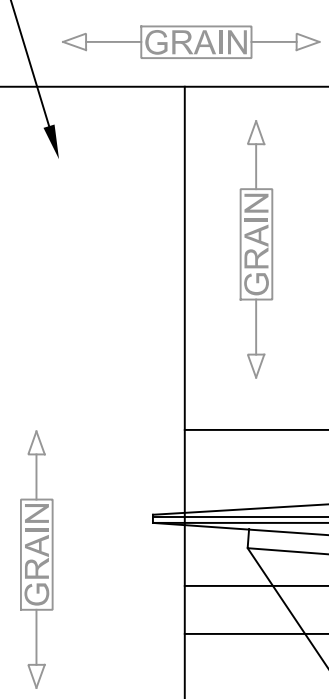


$\frac{3}{8}$  BALSA  
TAPER TO  
TOP OF  
FUSELAGE



$\frac{3}{16}$  BALSA  
CANOPY TO  
DASHED LINE  
TAPER  
FUSELAGE INTO  
CANOPY  
SECTION

$\frac{3}{16}$  BALSA OR BASS  
FIN + RUDDER



FIBREGLASS ALL SURFACES  
PRIOR TO FINAL ASSEMBLY

$\frac{3}{16}$  OR  $\frac{3}{8}$  BALSA  
CANOPY AND TURTLEDECK  
SEE X-SECTIONS

$\frac{1}{4}$  X  $\frac{3}{8}$  SPRUCE STRINGERS

$\frac{3}{8}$  BALSA FUSELAGE

$\frac{1}{16}$ " PLYWOOD DOUBLERS  
BEVEL AFT EDGES

$\frac{3}{8}$  DOWEL INSET

$\frac{3}{8}$  X  $\frac{1}{2}$  MAPLE  
X2

BISCHOFF TANK AND SHUTOFF

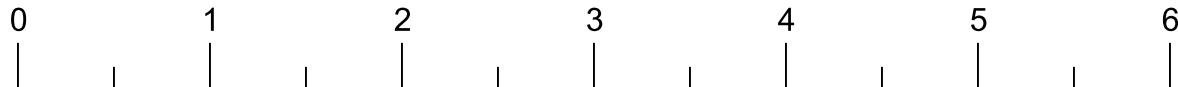
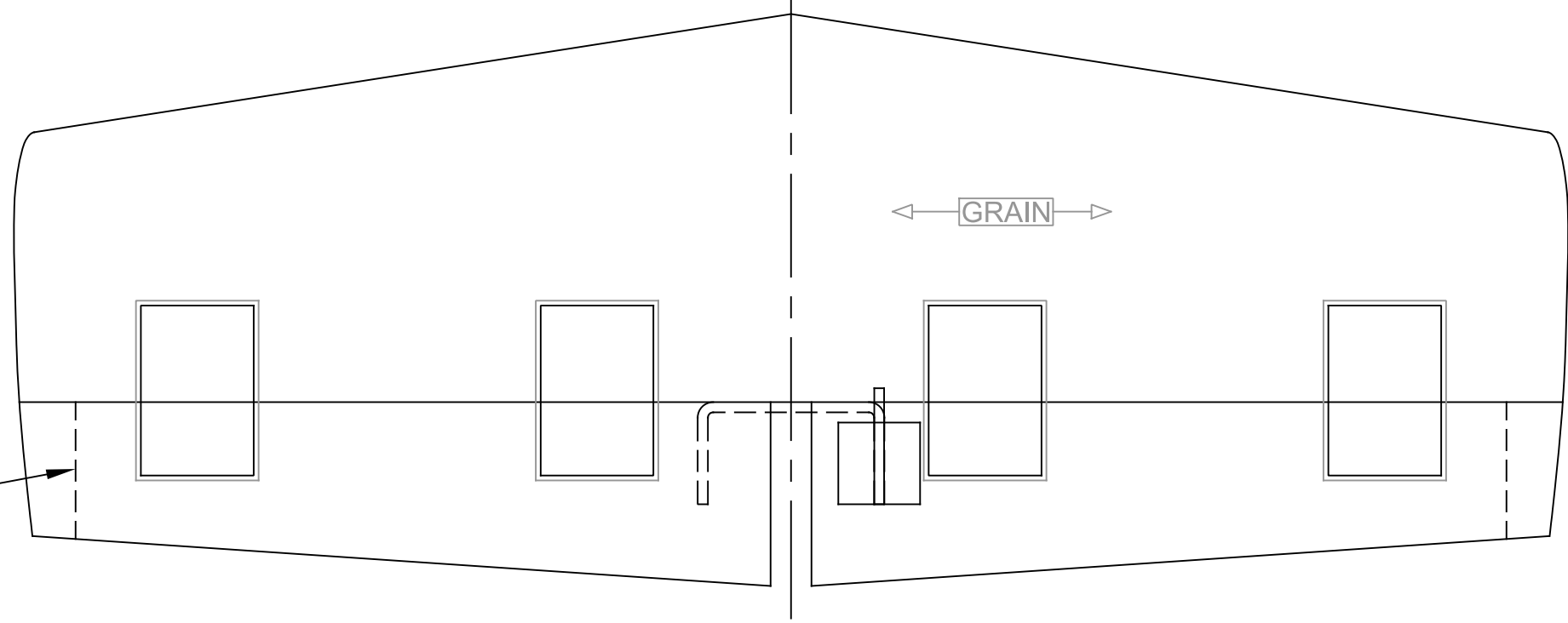
$\frac{3}{8}$  X  $\frac{1}{2}$  MAPLE  
CARVE TO SHAPE

$\frac{1}{16}$  WIRE TAIL SKID

WITH BOTTOM MOUNTED ELEVATOR  
HORN YOU MUST USE 'PUSH-TO-TRIP'  
FUEL SHUTOFF, OR WORK OUT A WAY  
TO 'PULL' FROM BELLCRANK OR  
ELEVATOR.

$\frac{1}{32}$ " PLY STAB CORE  
CUT OUT FOR HINGES AND JOINER  
FACE WITH  $\frac{3}{32}$ " BALSA  
SAND TO AIRFOIL

OPTION: SCALE END  
OF ELEVATOR  
A LITTLE CARBON WOULD  
HELP STRENGTHEN STAB



31

Miss San Bernardino

History:  
Original build as "La Jolitta" #31  
1949 renamed "Wingwax" #31  
1964 renamed "Miss San Bernardino" #31  
1967 renamed "Skeeter" #31  
1980 renamed "Little Niner" #9  
1982 renamed "Scholl Special" #31

Sport Scale Racer designed by Gerry van Dyk  
© 2025 Gerry van Dyk  
structure based on Mayer / Bischoff designs

visit: <https://nclra.org/Plans>  
for other Sport Goodyear plans.

Bill Bischoff Racing Supplies. Fuel Tanks, Venturis  
Landing Gear, Shutoffs contact: [billbisch@hotmail.com](mailto:billbisch@hotmail.com)

Fuselage = 23.62"  
Wing Span = 26.00"  
Stab Span = 9.50"  
Wing Area = 144 in sq  
Stab Area = 28.1 in sq